



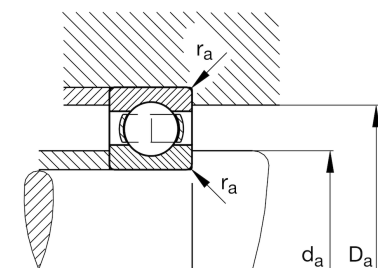
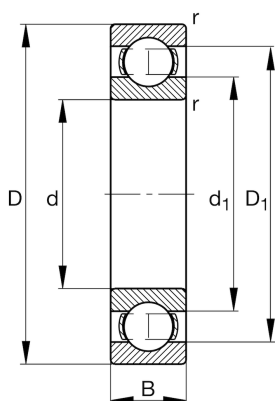
FAG

61830

Deep groove ball bearing

Schaeffler ID:
0190974090000Deep groove ball bearing 618, single row,
steel sheet metal cage

Technical information

**Main Dimensions & Performance Data**

d	150 mm	Bore diameter
D	190 mm	Outside diameter
B	20 mm	Width
C_r	54.000 N	Basic dynamic load rating, radial
C_{0r}	60.000 N	Basic static load rating, radial
C_{ur}	2.490 N	Fatigue load limit, radial
n_G	4.700 1/min	Limiting speed
n_{gr}	3.200 1/min	Reference speed
	1,15 kg	Weight

Dimensions

r_{min}	1,1 mm	Minimum chamfer dimension
D_1	177,9 mm	Shoulder diameter outer ring
d_1	162,7 mm	Shoulder diameter inner ring

Mounting dimensions

$d_{a min}$	156 mm	Minimum diameter shaft shoulder
$D_{a max}$	184 mm	Maximum diameter of housing shoulder
$r_{a max}$	1 mm	Maximum fillet radius

Calculation factors

f_0	16	Calculation factor
-------	----	--------------------

Temperature range

T_{min}	-30 °C	Operating temperature min.
T_{max}	150 °C	Operating temperature max.